

# ASSEMBLY INSTRUCTION



**Please note:**

## ***SunProCool – Frame Assembly:***

→ The SunProCool-Frame is attached to the **outside of the window**.  
(Inside is also possible, but with less protection.)

## ***SunProCool – Frame Cleaning:***

- **Use cotton cloths only**
- **Do not use microfiber cloths**



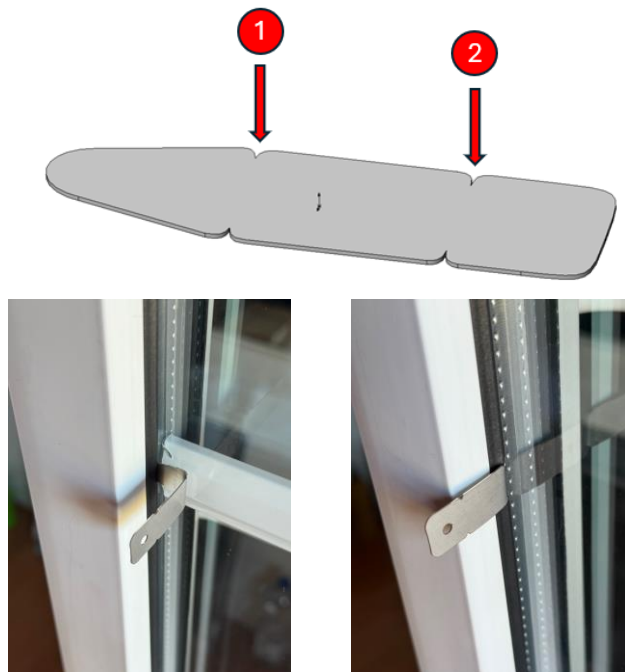
## **Testfit**

Hold the SunProCool-Frame onto the glass surface (do not glue it yet) and check if it fits, including the surrounding brush. (Do not remove the protective film yet!!!)



## **Assembly Preparation (Window)**

Clean the glass surface thoroughly with a glass cleaner! (Dirt and dust particles must be removed completely; the glass surface has to be free of grease and silicone.)



## Optional

Insert the SunProCool mounting brackets at various positions (left/right/top/bottom) with the pointed end beneath the rubber seal on the window frame up to position ❶. Then bend them approximately 90° at position ❶.

These mounting brackets serve as **additional** mechanical security for the SunProCool frame.



## Assembly Preparation (SunProCool Frame)

Remove the protective tape from the 3M adhesive pads on the SunProCool-Frame.



## Assembly

Position the SunProCool-Frame slightly tilted at the bottom of the window and press it to the glass surface from bottom up to top and stick it with 3M adhesive pads.



## Press

At the level of the adhesive pads, press the SunProCool-Frame firmly to the window using your hand. This increases the adhesive effect of the 3M adhesive pads.

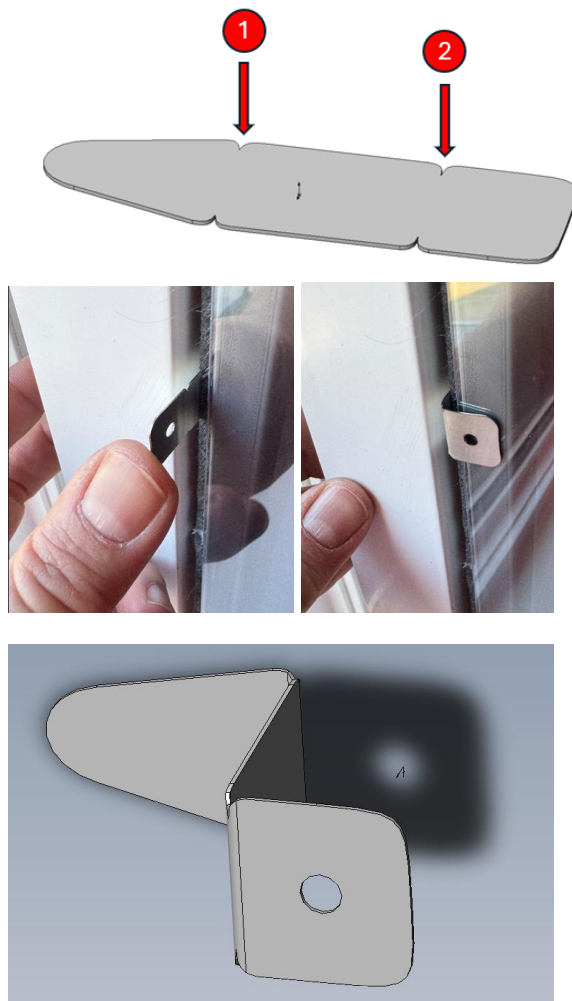


## Remove protective film

Carefully peel off the protective film.

## Correct position

By removing and reattaching the SunProCool-Frame, the frame position can be adjusted by a few millimeters.



## Optional

You can bend the SunProCool mounting bracket at position **2** by approximately 90° to cover the SunProCool frame.

To achieve better angles, push the mounting bracket slightly outward towards the window frame.

### Caution:

Mounting brackets may have **sharp edges!**

Use **cut-resistant gloves** !

These mounting brackets serve as **additional** mechanical fixation for the SunProCool-Frame.

**Congratulation, you are now using an innovative sun and heat protection for your rooms.**



**MADE IN GERMANY**

### Don't forget:

During the colder months the SunProCool-Frame can be removed, so that sunbeams may heat the rooms.